

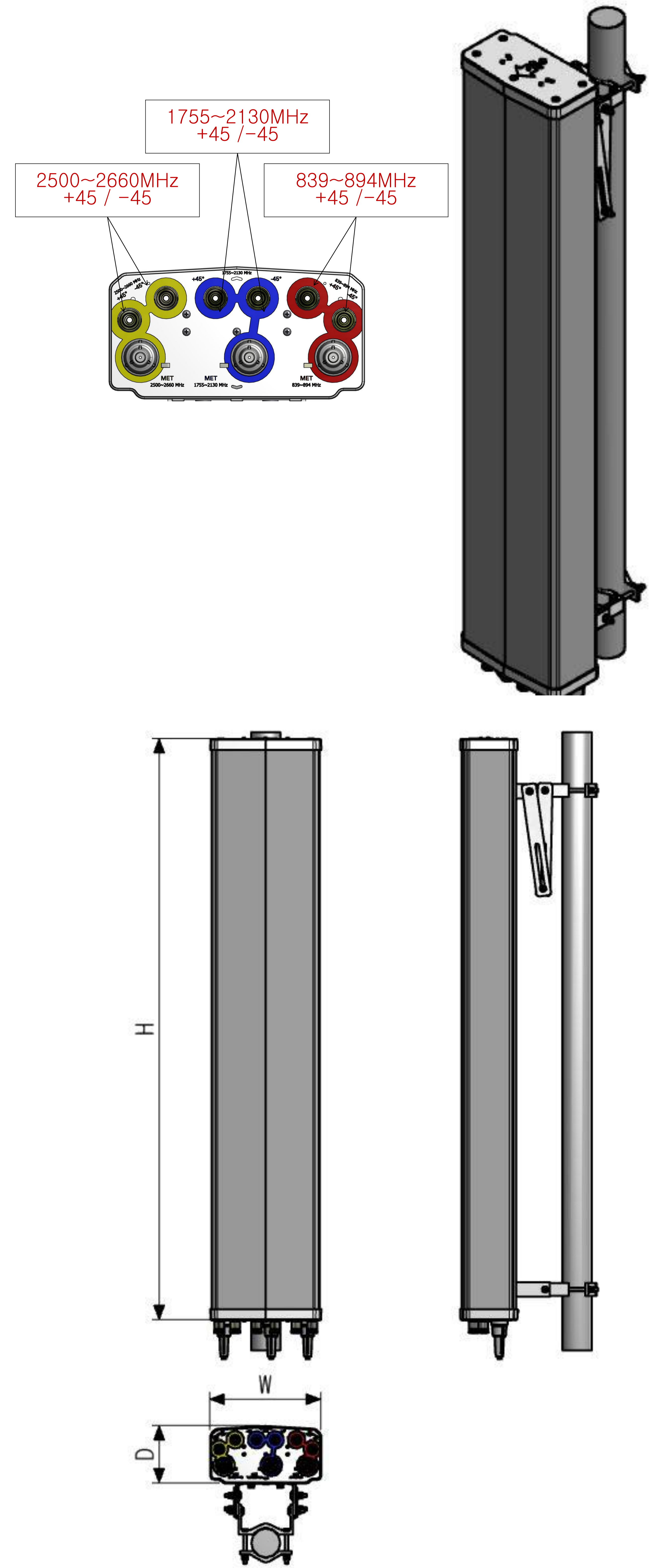
Quad Band Dual Polarization Horizontal 63° 12.5dBi

Adjust. Electrical Downtilt



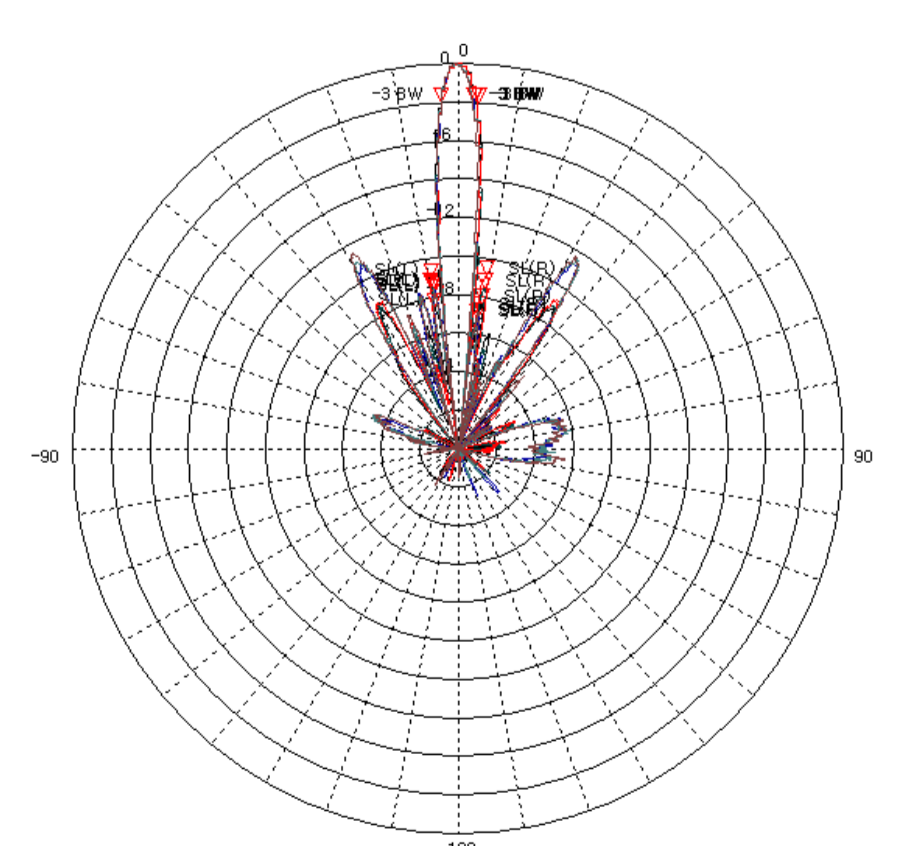
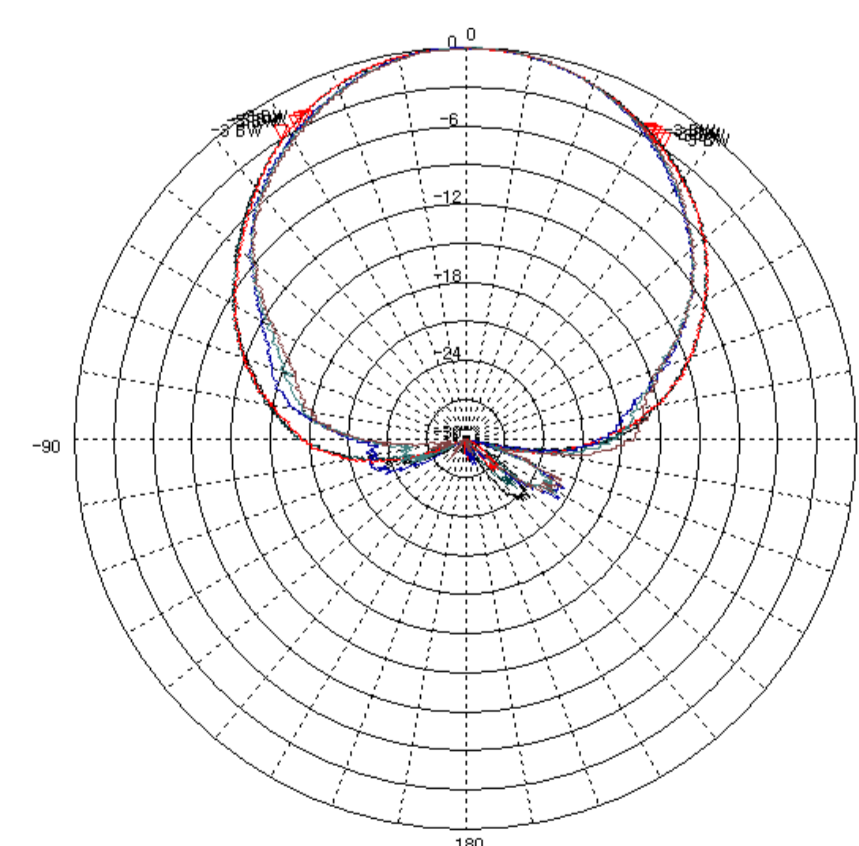
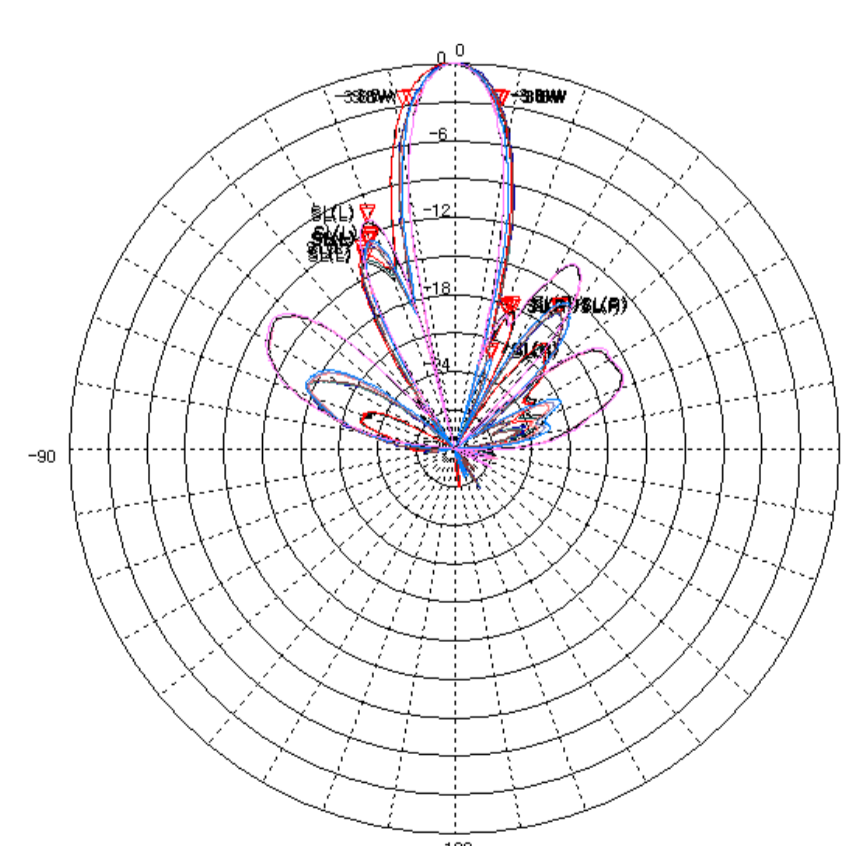
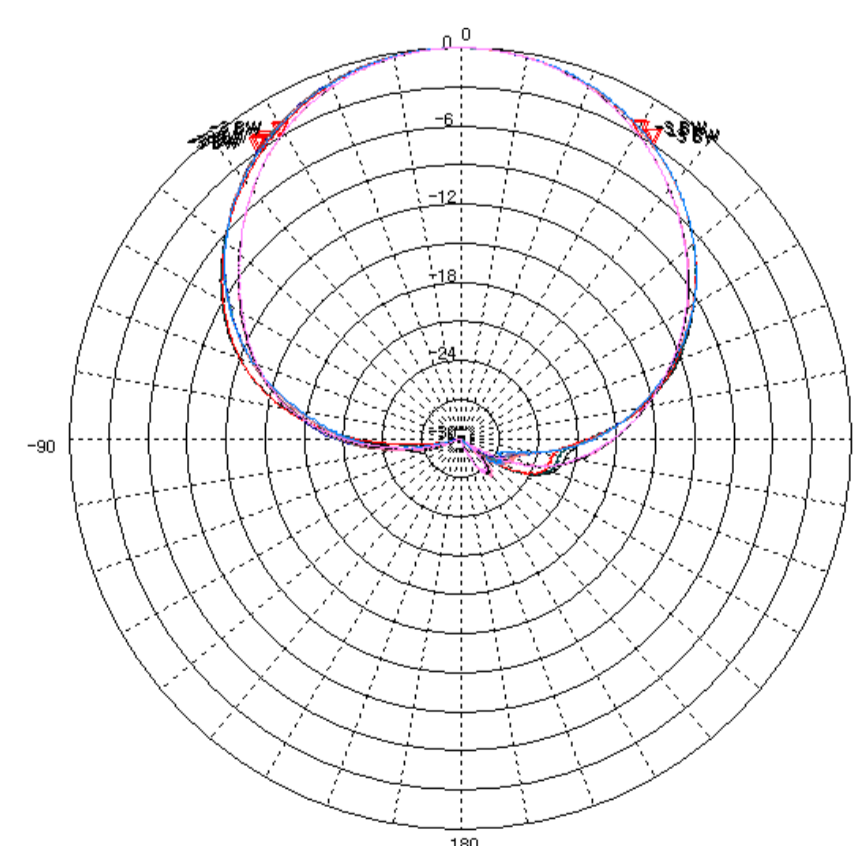
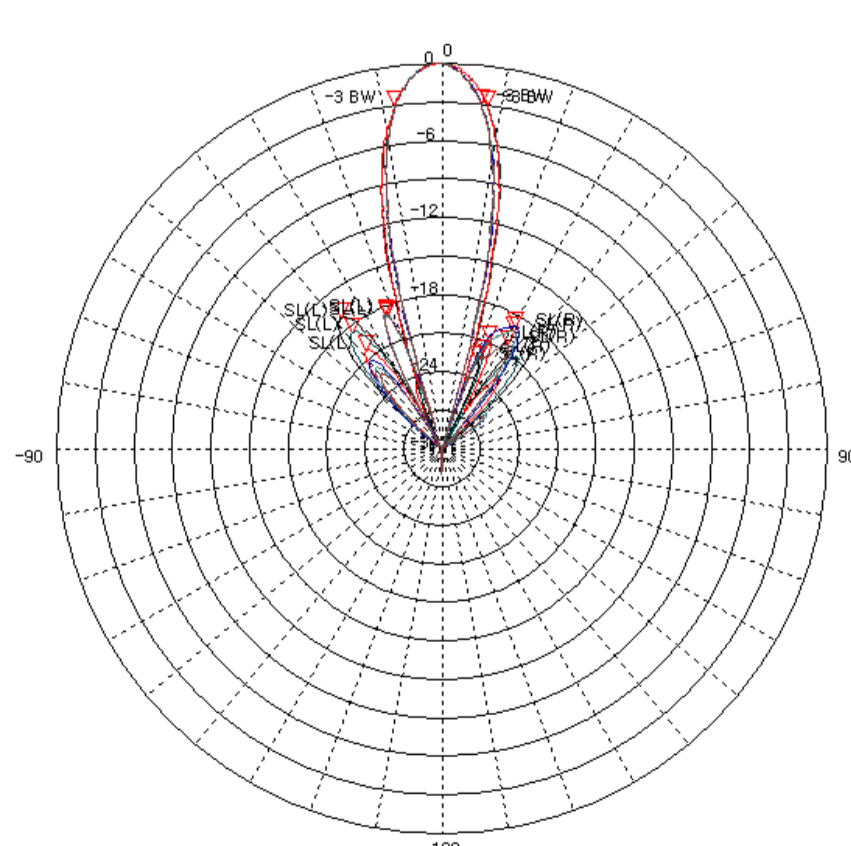
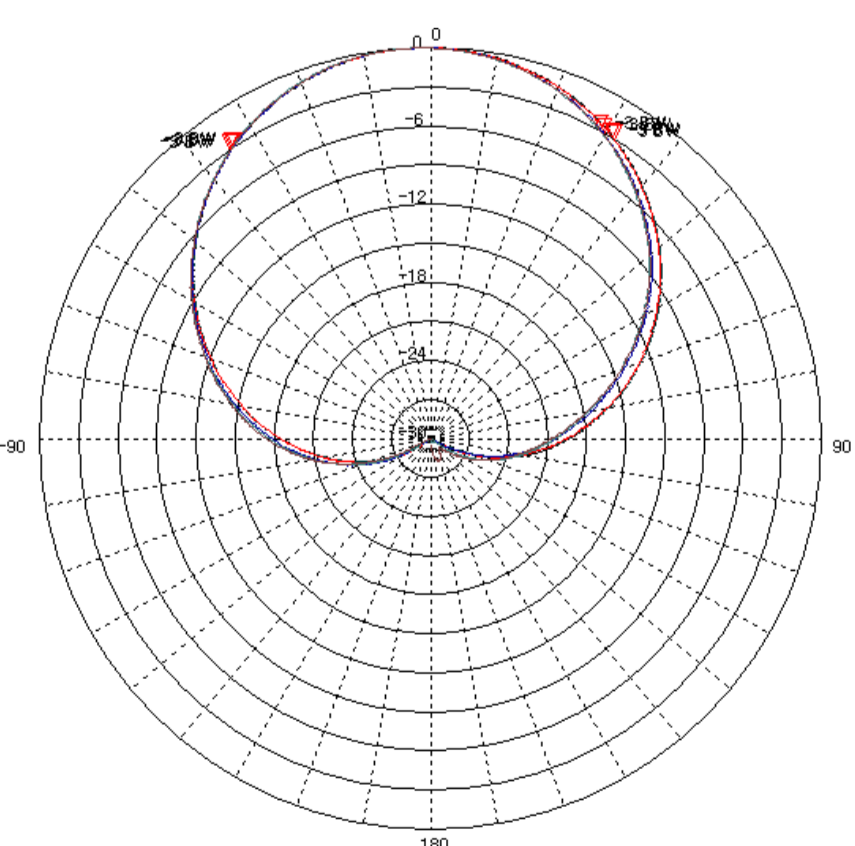
2.6G_EQBDP_63_12.5dBi

i. Electrical Specification			
Frequency Range	839~894 MHz	1755~2130MHz	2500~2660MHz
Band Width	55 MHz	375MHz	160 MHz
Gain	≥ 12.5 dBi (0°) ≥ 12.0 dBi (7°) ≥ 11.5 dBi (14°)	≥ 12.0 dBi (0°) ≥ 11.5 dBi (7°) ≥ 11.0 dBi (14°)	≥ 12.5 dBi (0°) ≥ 12.0 dBi (5°) ≥ 11.5 dBi (10°)
Polarization	± 45° SLANT	± 45° SLANT	± 45° SLANT
Beam width	Horizontal	65° ± 5°	63° ± 9°
	Vertical	22° ± 3°	20° ± 3°
F-B ratio	Horizontal (@180 ± 30°)	≥ 23 dB(0°) ≥ 22 dB(7°) ≥ 21 dB(14°)	≥ 25 dB(0°) ≥ 24 dB(5°) ≥ 23 dB(10°)
	Vertical (@180 ± 60°)	≥ 23 dB(0°) ≥ 22 dB(7°) ≥ 21 dB(14°)	≥ 25 dB(0°) ≥ 24 dB(5°) ≥ 23 dB(10°)
VSWR	≤ 1.5 : 1	≤ 1.5 : 1	≤ 1.5 : 1
Impedance	50 Ω	50 Ω	50 Ω
Electrical tilt	0° ~ 14°	0° ~ 14°	0° ~ 10°
Isolation	≥ 30 dB	≥ 27 dB	≥ 27 dB
IMD (3rd)	≤ -150 dBc @ 2x43dBm	≤ -150 dBc @ 2x43dBm	≤ -150 dBc @ 2x43dBm
1st Upper Side lobe level	≥ 15 dB (0°), 14 dB (7°), 13 dB (14°)	≥ 15 dB (0°), 14 dB (7°), 13 dB (14°)	≥ 15 dB (0°), 14 dB (5°), 13 dB (10°)
Cross-Polar Ratio	0°	≥ 15 dB	≥ 15 dB
	±60°	10 dB (0°), 9 dB (7°), 8 dB (14°)	8 dB (0°), 7 dB (7°), 6 dB (14°)
Tracking (±60°)	≤ 3 dB	≤ 3 dB	≤ 3 dB
Squint	± 3.5°	± 5°	± 5°
Maximum input power	≥ 200 W		



ii. Mechanical Specification	
Radom Dimension (W x D x H)	290 x 147 x 1096 mm
Weight (exclude bracket)	≤ 9.13 kg
Connector Type	7/16" DIN-Female x 6
Withstand Wind Pressure	60 m/sec
Radom Material (color)	A.S.A. +P C (Cool Gray 4C)
Mechanical Down Tilt	0° ~ 30°
Temperature	-40 °C ~ 70 °C
Packing Size (H x W x D)	-
Packing Weight	-

iii. Radiation Pattern



Horizontal Pattern
Low Band

Vertical Pattern
Low Band

Horizontal Pattern
High Band

Vertical Pattern
High Band

Horizontal Pattern
2.6G High Band

Vertical Pattern
2.6G High Band